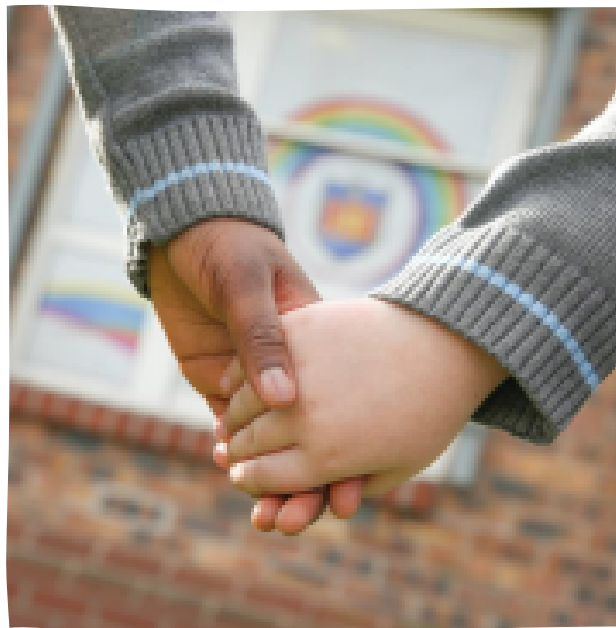




ST MATTHEW'S CATHOLIC PRIMARY SCHOOL

INCLEMENT WEATHER POLICY

2023-2024



**WRITTEN: SEPTEMBER 2023
REVIEWED: SEPTEMBER 2024**

LEADER: MRS SIME

LOVE, LEARN AND SHINE TOGETHER WITH JESUS

It is the policy of St. Matthew's Catholic Primary School to make every effort to remain open whenever possible.

The school will endeavour to ensure pathways are cleared, salted/gritted. However, staff, parents, children and members of the public should still proceed with caution.

During significant adverse weather conditions the school will be open from 8.45am for parents to bring their children inside.

The decision to close the school either before or during the school day will be made by the Head Teacher. The school will only be closed if one or more of the following conditions apply:

- Insufficient staff are able to come in to keep the school running safely.
- Conditions on site are dangerous.
- Conditions are considered to be or are anticipated to become too hazardous for travel.

If the school is to close during the school day and children need to be collected:

- Parents will be contacted by text if they have registered for 'Parentmail'.
- Staff will telephone children's emergency contacts as provided by parents.

If the school is to close outside of the school day:

- The closure will be recorded on the school website.
- The closure will also be recorded on the Liverpool City Council website.
- Local radio stations will be informed. The information will be displayed on their websites also.

The school will make all practicable efforts to keep parents informed as to the situation. We do appreciate that such conditions and the uncertainty places very considerable difficulties upon parents. However, parents are expected to check the website and/or make themselves aware of the radio broadcasts when it is clear that closure is a possibility.

The school appreciates that during bad weather children may arrive later than normal; parents should endeavour to contact the school to let them know they are on their way if likely to be delayed. Parents acting upon the assumption that the school would be closed without gaining confirmation, or failing to inform the school of the circumstances that prevents the child coming into school risks their child being registered as an un-authorised absence.

Where the school is officially closed, all absence is recorded as 'School closed, attendance not required'.

The school will also consider opening for part of the school day to allow children and staff to get into school or leave early so that there is enough time for a safe journey.

The health and welfare of our whole school community is of paramount importance. We would ask for your support, patience and understanding in difficult weather conditions.